



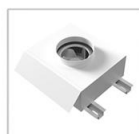
Walk-in Fume Hood



E-mail: export@biobase.com
www.biobase.cc / www.biobase.com



Water Sink



Exhaust Fan



Water & Gas Remote Control Valve



Water & Gas Tap

ADVANTAGE

1. With memory function in case of power-failure.
2. Operators are available to walk into the fume hood to operate if need.
3. Large room exhaust system, suitable for large laboratory instruments and equipment.

TECHNICAL PARAMETERS

Model	FH1200(W)	FH1500(W)	FH1800(W)	
External Size (W*D*H)	1200*800*2250mm	1500*800*2250mm	1800*800*2250mm	
Internal Size (W*D*H)	980*550*1670mm	1280*550*1670mm	1580*550*1670mm	
Max Opening	1300mm			
Exhaust Airflow Volume	1150m ³ /h	1500m ³ /h	1850m ³ /h	
Inflow Air Velocity	0.3~0.8m/s			
Noise	≤ 62dB			
Vibration	Amplitude ≤5μm			
Illumination	≥800Lux			
LED Lamp	12W*2	16W*2	16W*2	
Power Supply	AC220V±10%, 50/60Hz; 110V±10%, 60Hz			
Consumption	400W	500W	800W	
Front Window	Manual, 5mm toughened glass,height adjustable			
Material	Exterior	1.0mm cold-rolled steel with bacteria powder coating.		
	Interior	Compact laminate board with good acid and alkali resistance function		
Standard Accessory	External blower, LED lamp, Water tap, Gas tap, PP cup sink, Remote control water valve, Remote control gas valve, Waterproof sockets*4, 4.3 meters Φ300mm PVC exhaust duct			
Sockets	Total load of 4 waterproof sockets: ≤500W			
Package Size (W*D*H)	Main Body	1400*1050*2450mm	1710*1050*2450mm	2010*1050*2450mm
	Exhaust Blower	970*810*720mm	1040*890*710mm	1040*890*710mm
Gross Wight	300KG	340KG	390KG	